

Transportation Branch Safety Office

Motorcyc le Safety



National Driver Statistics

- **2,407 motorcyclists died in 1999.**
- **91% of motorcycle deaths were males.**
- **98% of males who died were drivers.**
- **33% of motorcycle deaths occurred among 16-29-year-old males.**



National Driver Statistics

Fatal Accidents

- 60% occurred on weekends (Friday-Sunday).
- 42% in single-vehicle motorcycle crashes B.A.C. $\geq 0.10\%$.
- 25% didn't have valid licenses.



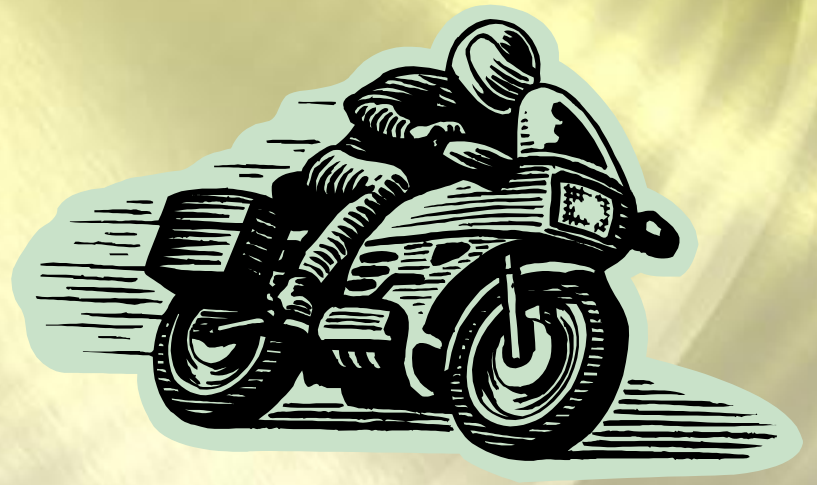
Army Driver Statistics

- **75 Class A-D**
- **21 fatal (28%)**
- **64% of fatal occurred among 16-29-year-old males.**
- **60% occurred on weekends (Friday-Sunday).**



TCFE Reg 385-10

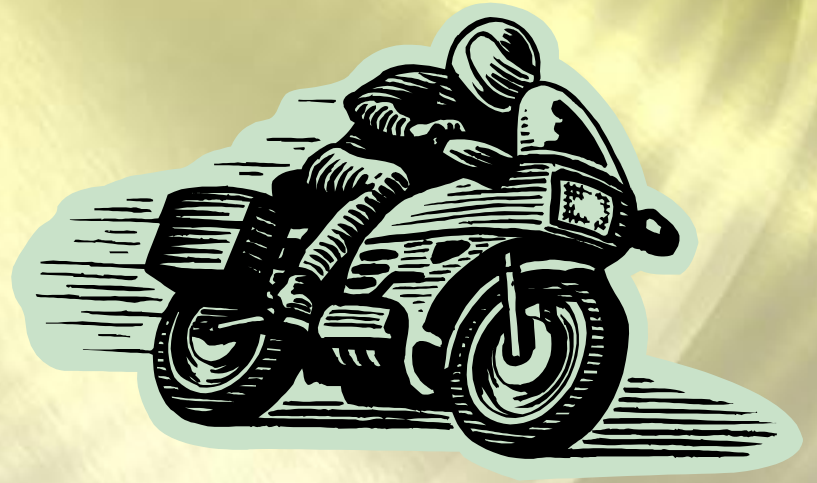
- **All operators of motorcycles or mopeds will:**
- **Successfully complete the Army-approved Motorcycle Safety Course.**
- **Wear protective equipment as outlined in AR 385-55 and TCFE Reg 190-5.**



Motorcycle/Moped **Requirements**

- **State registration ***
- **State inspection ***
- **Motorcycle driver's license or endorsement ***

*** Does not apply to
MOPEDS**



Motorcycle/Moped **Requirements**

- **Completion of Motorcycle Safety Course (with decal affixed to vehicle)**
- **Headlight on during operation**
- **Two rear-view mirrors**

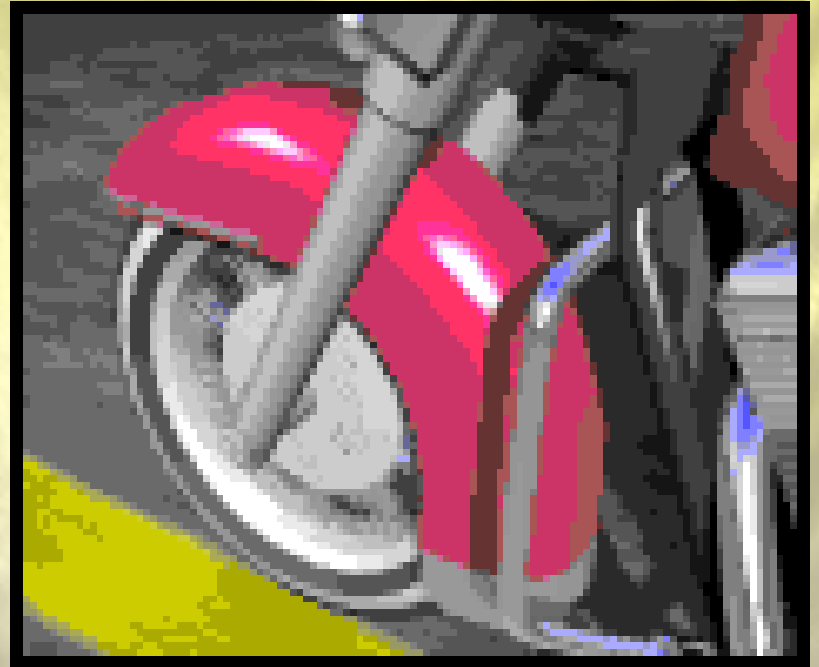


Protective Clothing and Equipment

- **DOT-approved helmet**
- **Eye protection (clear goggles or face shield)**

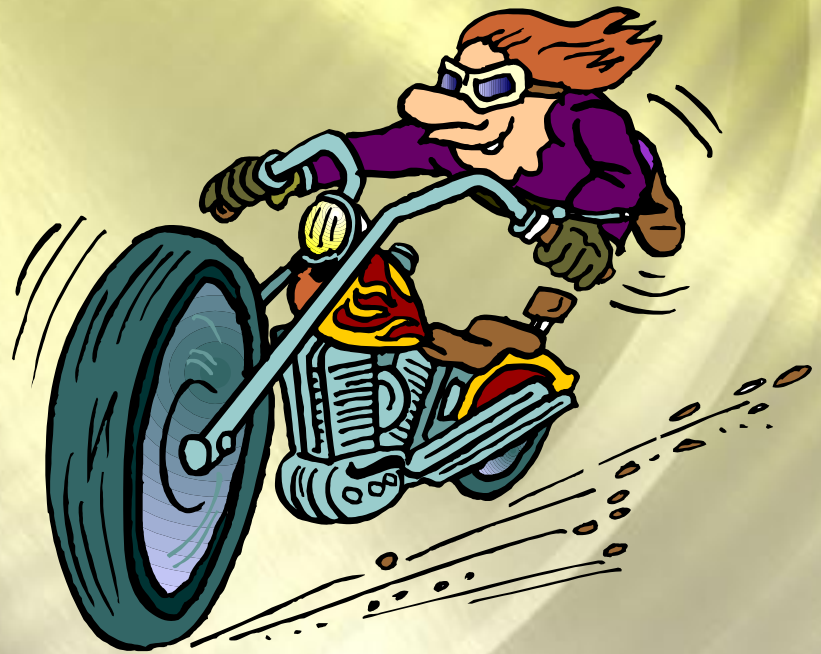
NOTE: FAIRING OR WINDSHIELD IS NOT SUFFICIENT

- **Full-fingered gloves**

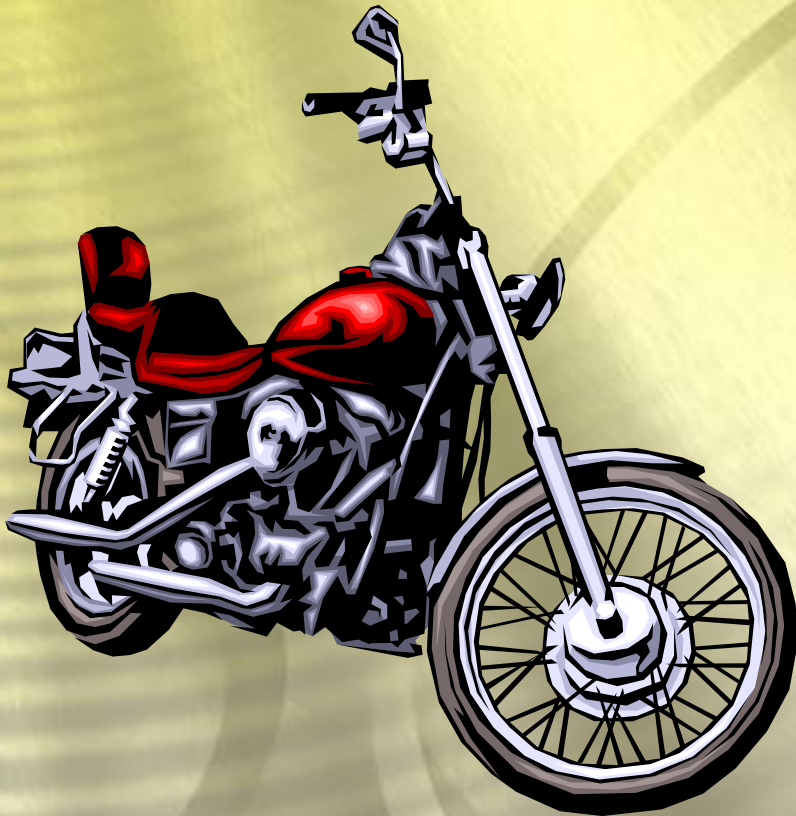


Protective Clothing and Equipment

- Long trousers
- Long-sleeved shirt or jacket
- High-visibility garment (bright color for day and retro-reflective for night - reflective vest may be worn over military uniform)
- Leather boots or over-the-ankle shoes



Motorcycle Safety Course



- **21 April (Sat)**
- **23 April**
- **14 May**
- **9 June (Sat)**
- **18 June**
- **23 July**
- **20 August**
- **8 September (Sat)**
- **17 September**

Transportation Branch Safety Office

Motorcyc le Safety

